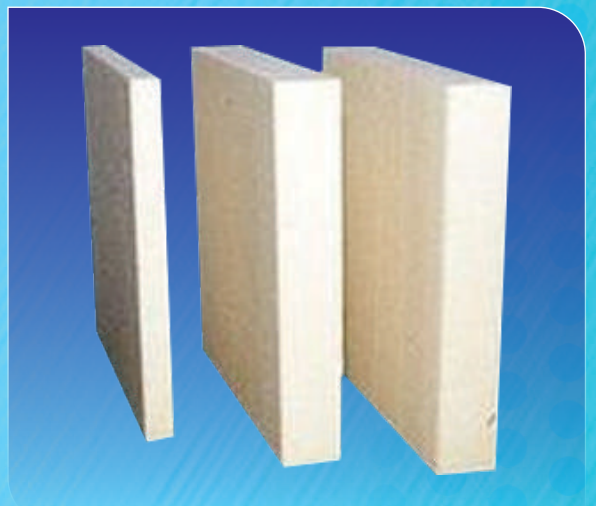
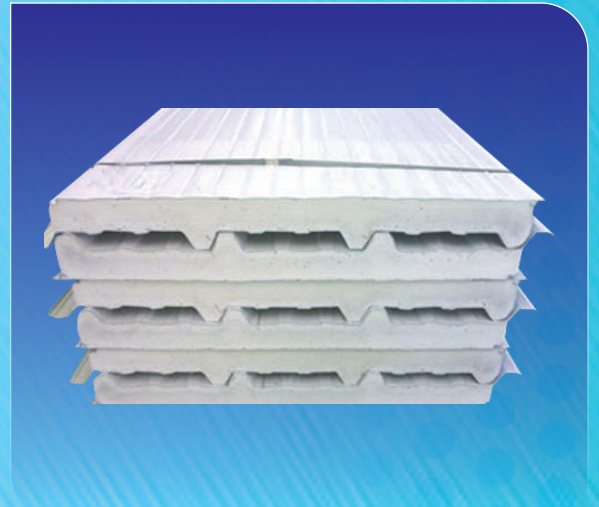
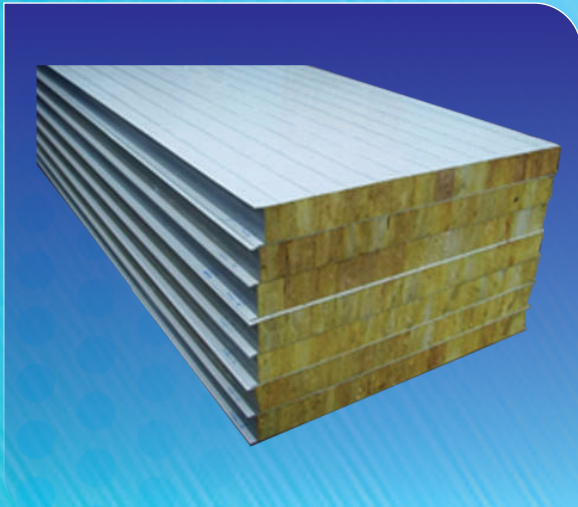


Annam Fab Tech

MANUFACTURER OF PUF SANDWICH PANELS FOR WALL AND ROOF



**MANUFACTURER OF
PUF SANDWICH PANELS FOR WALL AND ROOF**

INTRODUCTION

Annam Fab Tech:

An Indian Company, in Technical collaboration with International Expert Companies from Italy and Middle East, established in 2013. The manufacturing concern is to serve the Indian market and neighbouring countries by supplying insulated and un insulated metal, roof and wall cladding with highest quality.

Our Manufacturing Facility is located in Chennai, using the most modern and sophisticated technology and in collaboration with Italy and Middle East to produce the best quality cold storage panels and roof panels.

Our organization consist of various specialized groups of dedicated, capable and well trained professionals of over 25 years experience who are well co-ordinated and organized to provide the best service and to achieve the highest quality standards for the absolute satisfaction of our customers.

Versatility:

Annam Fab Tech cold store panels are used for walls, partitions and ceiling systems as well as for floors. Annam Fab Tech wall panels have a standard 1150 mm width to achieve the optimum economy and yet ease of installation. Annam wall panels can be produced at any required width and length to suit the various room designs and volumes.

The extremely high thermal efficiency and wide range of panel sizes and thicknesses provide designers and specifiers with the opportunity to use Annam cold storage panels with great versatility in a variety of commercial, industrial and institutional cold storage projects.

Our Promise:

To Develop, manufacture and market the innovative metal panels and related products for industrial, commercial, institutional and residential markets at the lowest cost, consistent with the highest quality standards.

To dedicate ourselves to provide the best possible customer service to our direct and indirect customers.

And to continue to be a market leader in India and to execute further growth there in while searching out other markets and developing them in the most cost efficient manner.

Annam Foam Specification

When Specifying Annam foam panels for cold storage applications, the following physical properties and performance criteria must be considered.

ANNAM FOAM WALL AND CEILING SYSTEM

Width:

Nominal effective coverage of 1.150 m.
(Other widths options available on request)

Thickness :

30 mm, 50 mm, 60 mm, 80 mm, 100 mm, 120 mm, 150 mm.

Length:

Maximum of 12 m.

Exterior and Interior Skins:

Steel gauge : 0.4, 0.5, 0.6, 0.75, 0.8, 0.9 mm.

- Hob dipped galvanized and oven curved PPGI and Galvalume available.
- Stainless steel – 0.5, 0.6, 0.8 mm
- Pre-painted Aluminium of range 0.5, 0.6, 0.7, 0.8 mm
- Kraft Paper
- Aluminium foil with Kraft paper back.
- Paint coating finishes like, polyester, PVF 2, Plastisol HP100, HP 200,
- Colours in RAL 9002 or any other RAL colour.

Insulation Properties:

Type = polyurethane / poly isocyanurate foam

Density = From 38 to 42 kg / m³

Closed all content -> 92 %

Compression strength – 160 kpa

Tensile strength – 3.0 kg/ cm²

Thermal Conductivity – 0.023 w/m²c

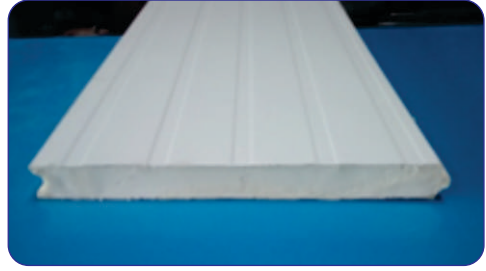
Fire rating – B3 / B2 Classification.

Insulation value:

Panel thickness	30 mm	50 mm	60 mm	80 mm	100 mm	120 mm
U-value w/m ² c	0.77	0.46	0.38	0.29	0.23	0.19

Recommended Storage temperatures:

Material	Room Temperature	Panel thickness
Porta Cabins & Partitions	25°c to 15°c	30 mm – 60 mm
Vegetables & fruits	5°c to 12°c	80 mm – 100 mm
Dairy product	0°c	100 mm
Fresh meat	0°c to - 20°c	100 - 120 mm
Frozen meat	-25°c	125 - 150 mm



ANNAM FOAM ROOFING SYSTEM – TECHNICAL DATA

Width:

Nominal effective coverage of 1 m

Thickness:

30 mm, 50 mm, 70 mm, 90 mm.

Length:

Maximum of 12 m

Exterior and Interior skins:

Steel gauge: 0.4, 0.5, 0.6, 0.75

- Hob dipped galvanized and oven curved PPGI and PPGL
- Pre-painted Aluminium of gauge 0.5, 0.6, 0.7
- Kraft paper (for interior skins)
- Aluminium foil with Kraft paper back (for interior skins)

Coating and finishes : Polyester, PVF2

Colours : RAL 9002 Off white, Blue, Brick red etc.

Insulation Properties:

Type = polyurethane / poly isocyanurate foam

Density = From 38 to 42 kg / m³

Closed cell content - >92 %

Compression strength – 160 kpa

Tensile strength – 3.0 kg/ cm²

Thermal Conductivity – 0.023 w/m²c

Fire rating – B3 / B2 Classification.

Annam Fab System PUF applications:

Aircraft Hangers	Dates factories	Ice plants	Schools
Banana stores	Factories	Industrial roof and walls	Show room
Car Parks	Food processing plants	Mushroom store	Slaughter Houses
Cold stores	Freezer Rooms	Petrol stations	Sport Centres
Computer rooms	Fire stations	Poultry farms	University Labs
Desalination plants	Housing project	Potato stores	Walk in chillers
Dairy Farms	Hospitals cold rooms	Power Plant	Roof Insulation

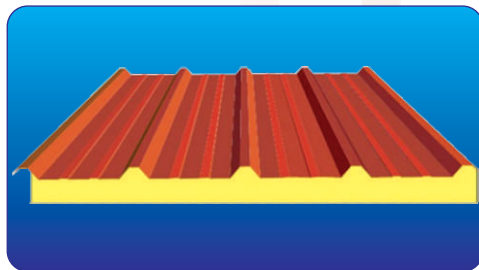
Durability is achieved by the use of the highest quality control and highest quality raw materials and accessories.

Controlled environment is achieved by precise selection of thermal panel efficiency, insulation thickness and proper design details.

Perfectly Sealed against any air or water infiltration.

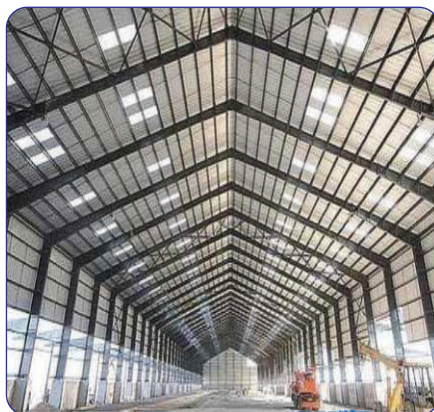
Annam Fab Tech system joints are perfectly sealed at all locations panel joints, corners and at suspension system

Side joints : In additional to the achievement of a perfect foam to foam contact.



Corners : All Horizontal and vertical corners are designed to achieve the maximum security against any thermal bridging or water vapour infiltration. Panel ends are coped and corner joints are field foamed to achieve perfect structurally stable and rigid corners. All corners are further covered by the use of a matching metal flashing.

Suspension system : A Heavy duty T-profile together with all necessary stainless steel rivets, bolts and nuts provide the system with the suspension T-profile is hung to the roof structure by means of threaded steel rods at 1.0 meter on center covered with rubber foam jackets that fit perfectly around the steel rods to prevent condensation.





WE HAVE COME A LONG WAY



REGIONAL OFFICE:

ANNAM FAB TECH

No.123, Padur Main Road, Irulapalayam, Kuthapakkam Post - 602 107.

E-mail : sales@annamfabtech.com, admin@annamfabtech.com Web : www.annamfabtech.com